

SHEETS

- L-1 ALLIED PARK
- L-2 OLBRICH PARK (WALTER ST)
- L-3 WARNER PARK (BOAT LAUNCH)
- L-4 WARNER PARK (BOAT LAUNCH)
- L-5 WARNER PARK (PARKING LOT)
- L-6 WARNER PARK (PARKING LOT)
- L-7 WARNER PARK (PARKING LOT)
- L-8 WARNER PARK (PARKING LOT)
- L-9 WARNER PARK (PARKING LOT)
- L-10 WARNER PARK (PARKING LOT)

City of Madison  
 Department of Public Works  
**PARKS DIVISION**  
 City-County Building, Suite 104  
 210 Martin Luther King, Jr. Blvd.  
 PO Box 2987  
 Madison, WI 53701-2987



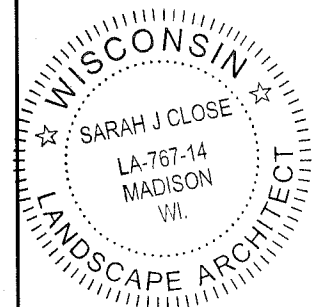
PROJECT:

*2019 PARKS DIVISION  
 LANDSCAPING*

# 2019 PARKS DIVISION LANDSCAPING CONTRACT

CITY OF MADISON PARKS DIVISION  
 DEPARTMENT OF PUBLIC WORKS  
 CONTRACT 8288

**MUNIS NOs: 10543-51-130, 19045-51-130, 17381-51-130,  
 17492-51-130**



Although every effort has been made in preparing these plans and checking them for accuracy, the contractor and subcontractors must check all details and dimensions of their trade and be responsible for the same.

ITEM	DATE
Advertised by: SC	2-7-2019
Approved by:	XX-XX-XXXX

PUBLIC WORKS PROJECT #:  
**8288**

SHEET TITLE:  
*LANDSCAPE PLANS*

SHEET NUMBER:  
**COVER SHEET**

**Plant Schedule**

Plants			
Species	Size	Container	Quantity
<b>Perennials and Grasses</b>			
Genista pilosa 'Vancouver Gold'	1 gal.	Container	5
Hibiscus 'Midnight Marvel'	2 gal.	Container	2
Lilium 'Tiny Skyline'	1 gal.	Container	12
Miscanthus sinensis 'NCMS2B'	1 gal.	Container	5


**LEGEND**

**PERENNIALS/GRASSES**

 HIBISCUS 'MIDNIGHT MARVEL'	 LILIUM 'TINY SKYLINE'
 GENISTA PILOSA 'VANCOUVER GOLD'	 MISCANTHUS 'NCMS2B'

City of Madison  
 Department of Public Works  
**PARKS DIVISION**  
 City-County Building, Suite 104  
 210 Martin Luther King, Jr. Blvd.  
 Madison, WI 53703

*play*  
**MADISON PARKS**

Scale: 1:30 

PROJECT:  
 2019 PARKS  
 DIVISION  
 LANDSCAPING

ALLIED PARK  
 2370 REVIVAL RIDGE  
 MADISON, WI 53711

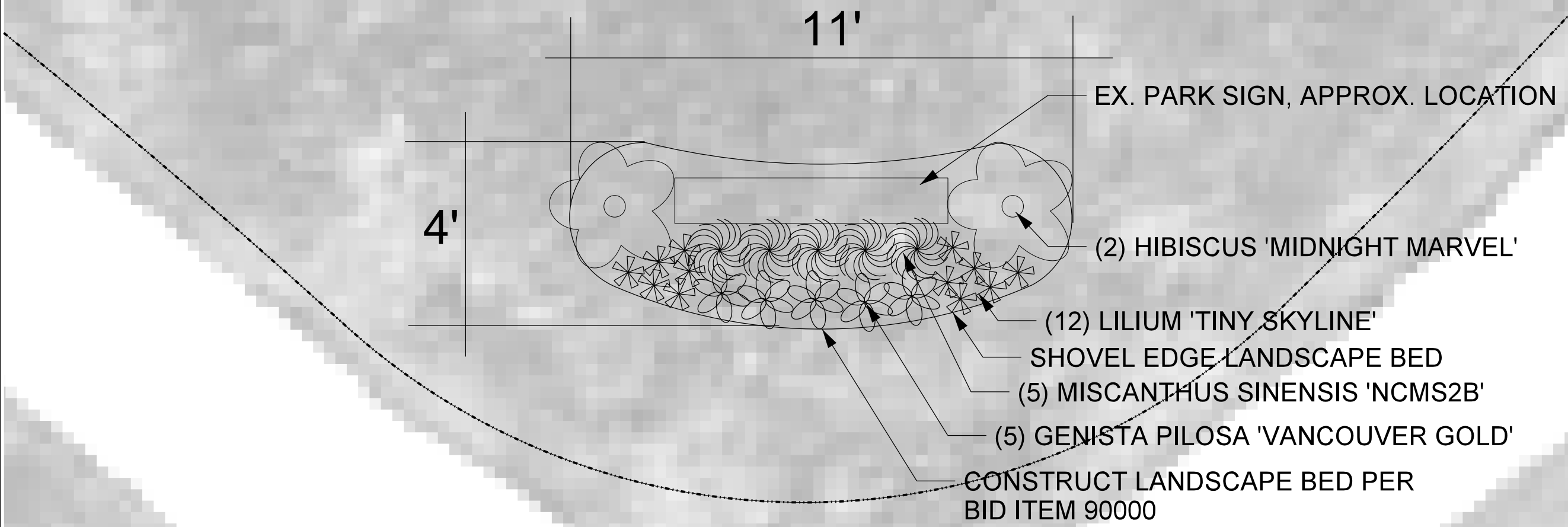
Although every effort has been made in preparing these plans and checking them for accuracy, the contractor and subcontractors must check all details and dimensions of their trade and be responsible for the same.

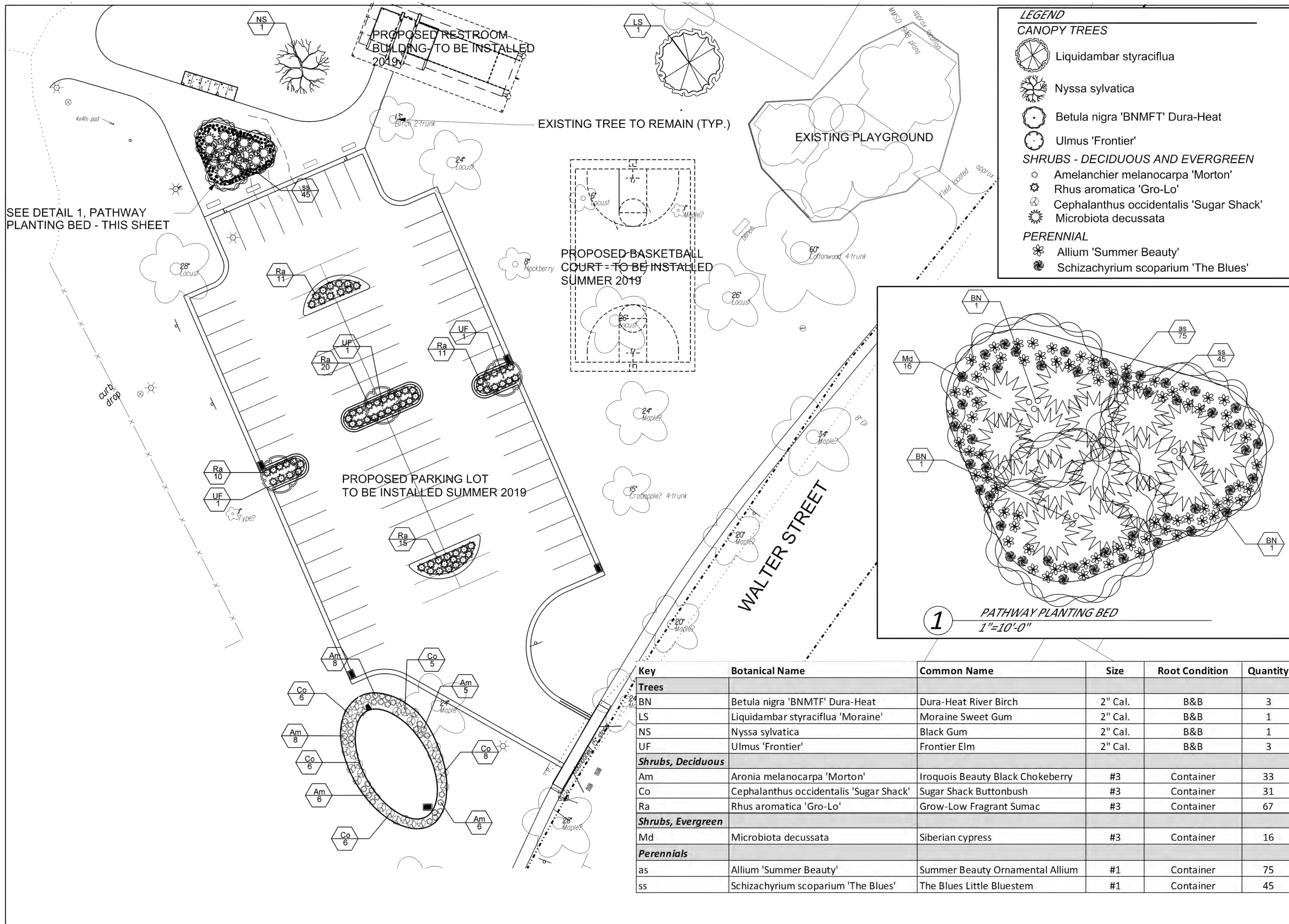
ITEM	DATE
Advised by: SC	2-7-2019
Approved by:	xx-xx-xxxx

PUBLIC WORKS PROJECT #:  
**8288**

SHEET TITLE:  
**PARK SIGN  
 PLANTING BED**

SHEET NUMBER:  
**L-1**





**City of Madison**  
 Department of Public Works  
**PARKS DIVISION**

City-County Building, Suite 104  
 210 Martin Luther King, Jr. Blvd.  
 Madison, WI 53703

*play*  
**MADISON**  
**PARKS**

Graphical Scale

0 40 ft



PROJECT:

*2019 PARKS*  
*DIVISION*  
*LANDSCAPING*

*OLBRICH PARK*  
*502 WALTER ST*  
*MADISON, WI 53714*

Although every effort has been made in preparing these plans and checking them for accuracy, the contractor and subcontractors must check all details and dimensions of their trade and be responsible for the same.

ITEM	DATE
Revised: KK	12-3-2018
Drawn by: KK	03-28-2018
Advised by: SC	3-7-2019

PUBLIC WORKS PROJECT #:

**8288**

SHEET TITLE:

*SITE LANDSCAPE PLAN*

SHEET NUMBER:

**L-2**

Although every effort has been made in preparing these plans and checking them for accuracy, the contractor and subcontractors must check all details and dimensions of their trade and be responsible for the same.

ITEM	DATE
Advised by: SC	2-7-2019
Approved by:	xx-xx-xxxx




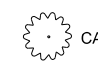



PUBLIC WORKS PROJECT #:  
**8288**

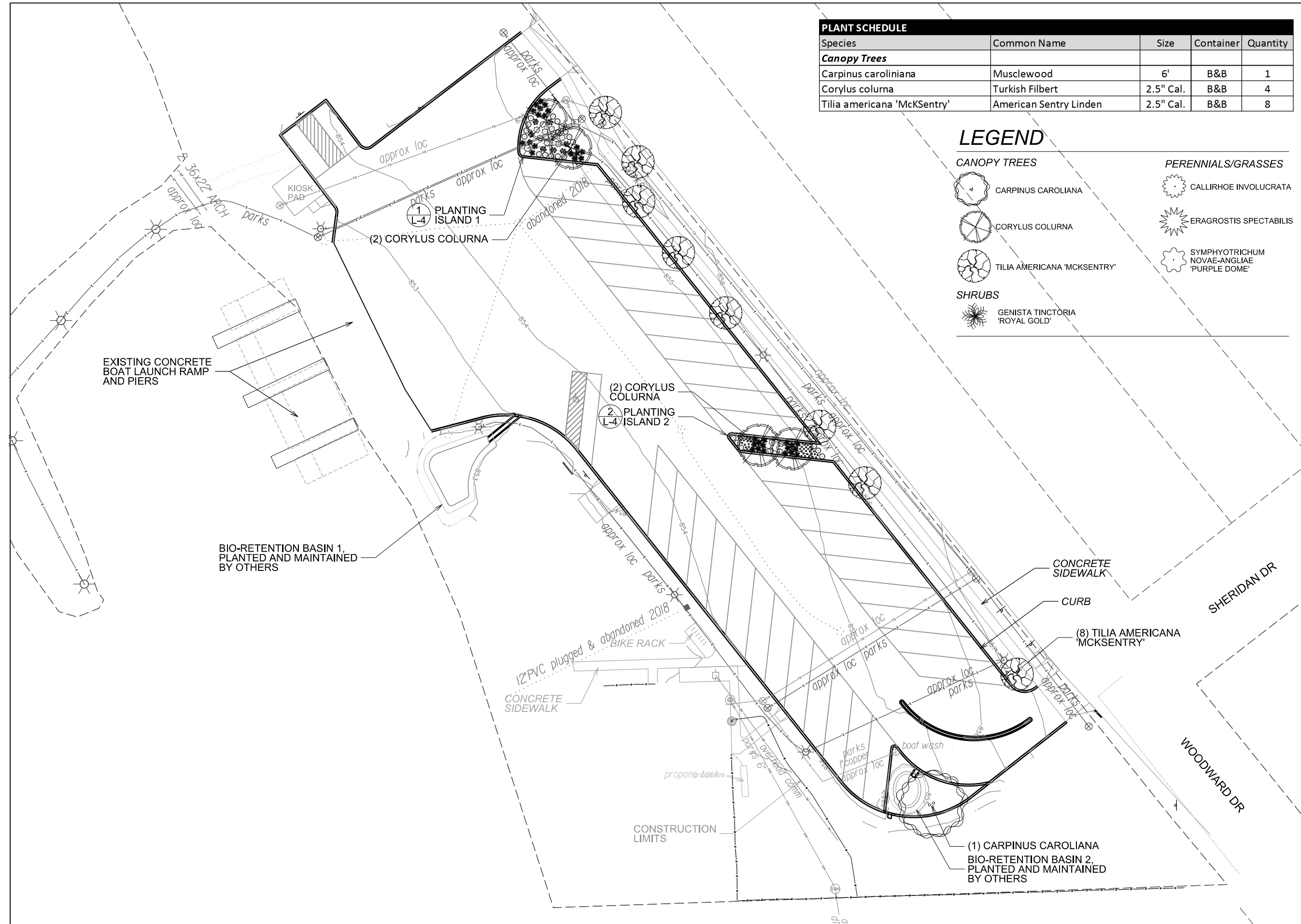
SHEET TITLE:  
**SITE LANDSCAPE PLAN**

SHEET NUMBER:  
**L-3**

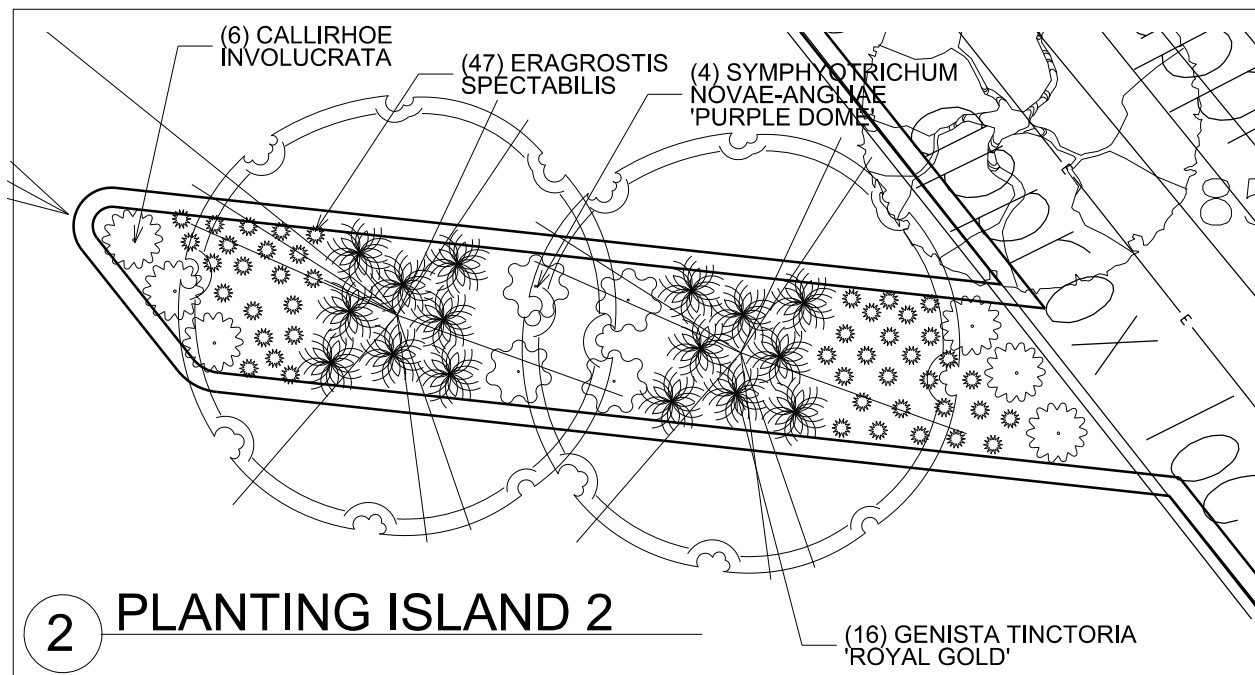
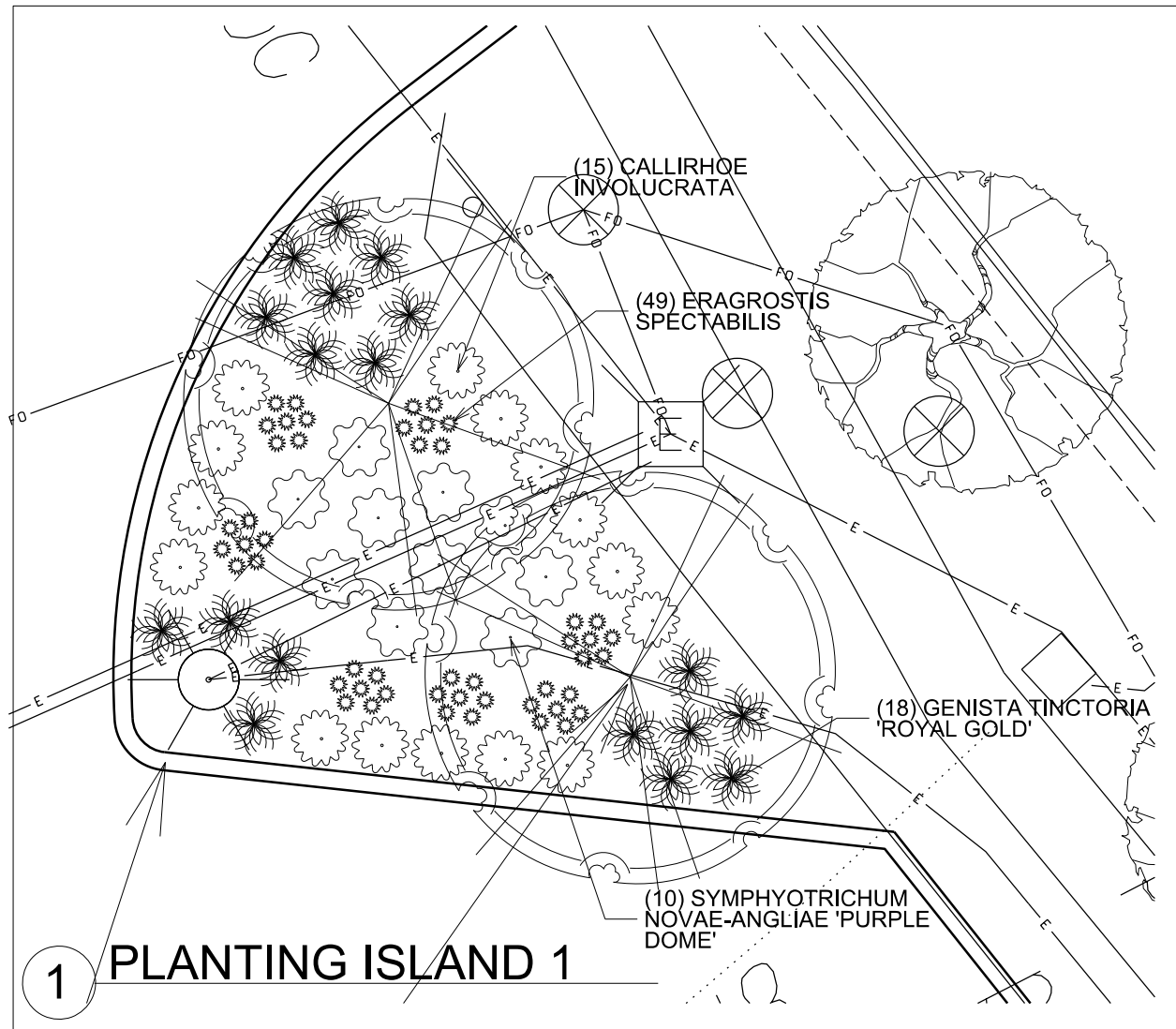
PLANT SCHEDULE				
Species	Common Name	Size	Container	Quantity
<b>Canopy Trees</b>				
Carpinus caroliniana	Musclewood	6'	B&B	1
Corylus colurna	Turkish Filbert	2.5" Cal.	B&B	4
Tilia americana 'McKsentry'	American Sentry Linden	2.5" Cal.	B&B	8

**LEGEND**

- CANOPY TREES**
-  CARPINUS CAROLIANA
  -  CORYLUS COLURNA
  -  TILIA AMERICANA 'MCKSENTRY'
- PERENNIALS/GRASSES**
-  CALLIRHOE INVOLUCRATA
  -  ERAGROSTIS SPECTABILIS
  -  SYMPHYOTRICHUM NOVAE-ANGLIAE 'PURPLE DOME'
- SHRUBS**
-  GENISTA TINCTORIA 'ROYAL GOLD'







**PLANT SCHEDULE**

Species	Common Name	Size	Container	Quantity
<b>Shrubs</b>				
Genista tinctoria 'Royal Gold'	Royal Gold Woadwaxen	#3	CONT.	34
<b>Perennials and Grasses</b>				
Callirhoe involucrata	Purple Poppy Mallow	#1	CONT.	21
Eragrostis spectabilis	Purple Love Grass	#1	CONT.	96
Symphotrichum novae-angliae 'Purple Dome'	Purple Dome Aster	#1	CONT.	14

**LEGEND**

**SHRUBS**

GENISTA TINCTORIA 'ROYAL GOLD'

**PERENNIALS**

CALLIRHOE INVOLUCRATA

ERAGROSTIS SPECTABILIS

SYMPHYOTRICHUM NOVAE-ANGLIAE 'PURPLE DOME'

City of Madison  
Department of Public Works  
**PARKS DIVISION**

City-County Building, Suite 104  
210 Martin Luther King, Jr. Blvd.  
Madison, WI 53703

*play*  
**MADISON  
PARKS**

Graphical Scale

0 25 ft



PROJECT:

*2019 PARKS  
DIVISION  
LANDSCAPING*

*WARNER PARK  
1101 WOODWARD DR  
MADISON, WI 53704*

Although every effort has been made in preparing these plans and checking them for accuracy, the contractor and subcontractors must check all details and dimensions of their trade and be responsible for the same.

ITEM DATE

Advised by: SC 2-7-2019

Approved by: xx-xx-xxxx

PUBLIC WORKS PROJECT #:

**8288**

SHEET TITLE:

*LANDSCAPE PLAN  
PLANTING DETAILS*

SHEET NUMBER:

**L-4**

City of Madison  
 Department of Public Works  
**PARKS DIVISION**  
 City-County Building, Suite 104  
 210 Martin Luther King, Jr. Blvd.  
 PO Box 2987  
 Madison, WI 53701-2987

*play*  
**MADISON  
 PARKS**

Graphical Scale

0 120 ft



PROJECT:

2019 PARKS  
 DIVISION  
 LANDSCAPING

**WARNER PARK**  
 1511 NORTHPORT  
 DRIVE  
 MADISON, WI 53704

Although every effort has been made in preparing these plans and checking them for accuracy, the contractor and subcontractors must check all details and dimensions of their trade and be responsible for the same.

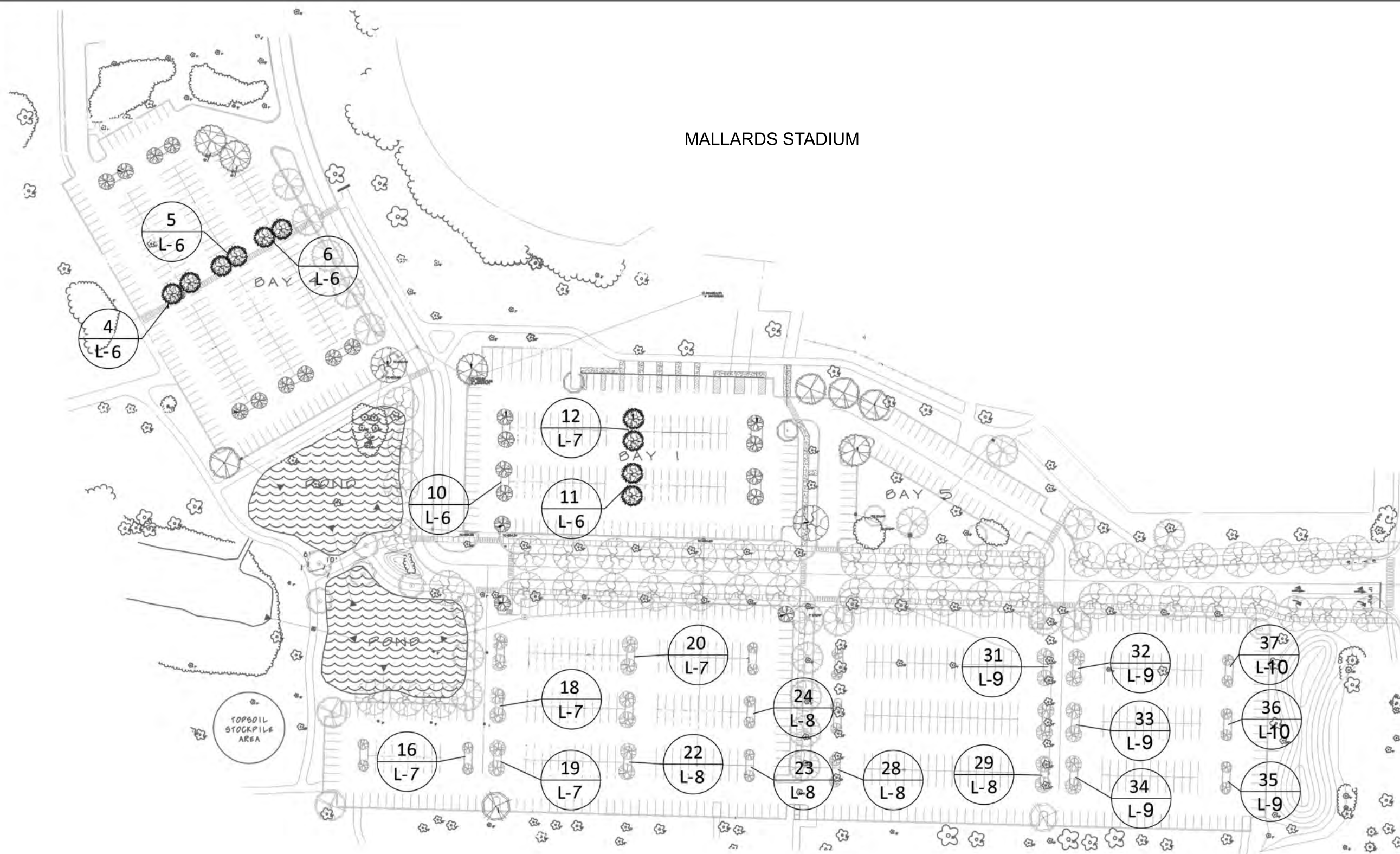
ITEM	DATE
Advertised by: SC	2-7-2019

PUBLIC WORKS PROJECT #:  
**8288**

SHEET TITLE:  
**LOCATION MAP**

SHEET NUMBER:  
**L-5**

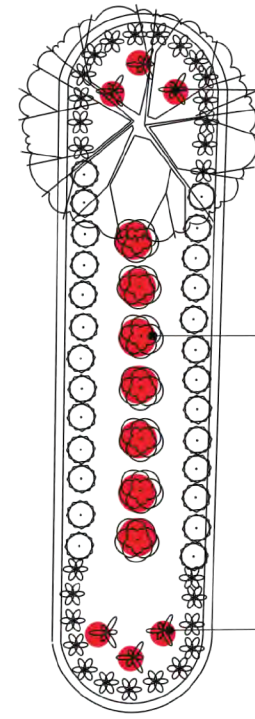
MALLARDS STADIUM



N SHERMAN AVE

**NOTE:**

See sheets L-6 through L-10 for planting details.



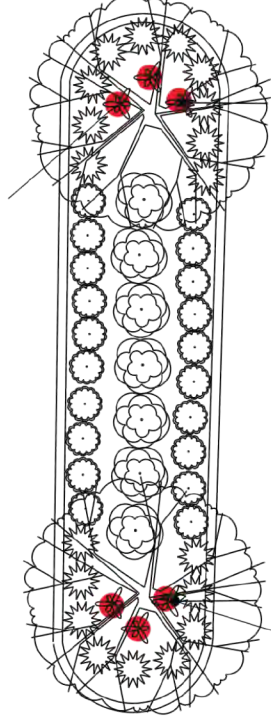
(3) *RUDBECKIA FULGIDA* VAR. *SULLIVANTII* 'GOLDSTURM'

(3) *RUDBECKIA FULGIDA* VAR. *SULLIVANTII* 'GOLDSTURM'

(7) *ACHILLEA* 'MARMALADE'

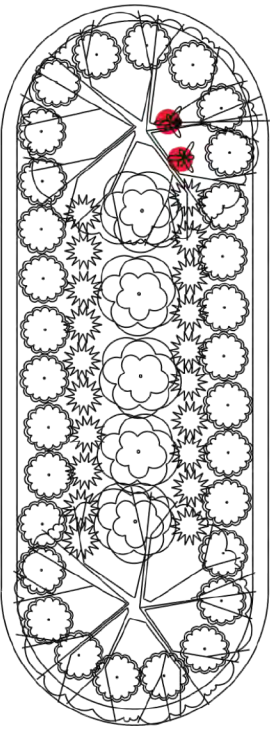
(3) *RUDBECKIA FULGIDA* VAR. *SULLIVANTII* 'GOLDSTURM'

4 PLANTING  
L-6 DETAIL



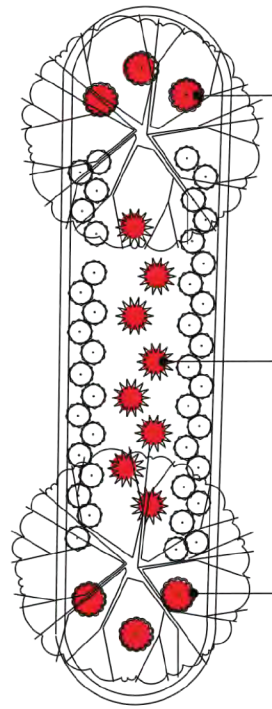
(3) *RUDBECKIA FULGIDA* VAR. *SULLIVANTII* 'GOLDSTURM'

5 PLANTING  
L-6 DETAIL



(2) *RUDBECKIA FULGIDA* VAR. *SULLIVANTII* 'GOLDSTURM'

6 PLANTING  
L-6 DETAIL

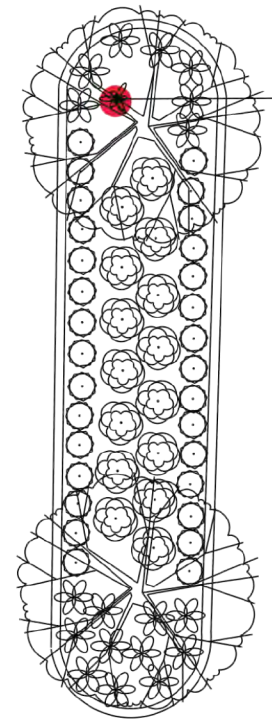


(3) *SPOROBOLUS HETEROLEPSIS* 'TARA'

(8) *SCHIZACHYRIUM SCOPARIUM* 'THE BLUES'

(3) *SPOROBOLUS HETEROLEPSIS* 'TARA'

10 PLANTING  
L-6 DETAIL

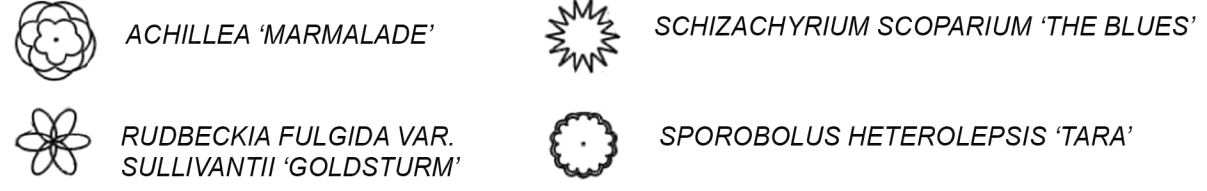


(1) *RUDBECKIA FULGIDA* VAR. *SULLIVANTII* 'GOLDSTURM'

11 PLANTING  
L-6 DETAIL

PLANT SCHEDULE				
Species	Common Name	Size	Container	Quantity
<b>Perennials and Grasses</b>				
<i>Achillea</i> 'Marmalade'	Marmalade Yarrow	#1	CONT.	7
<i>Rudbeckia fulgida</i> var. <i>sullivantii</i> 'Goldsturm'	Black-eyed Susan	#1	CONT.	15
<i>Schizachyrium scoparium</i> 'The Blues'	Little Bluestem	#1	CONT.	8
<i>Sporobolus heterolepis</i> 'Tara'	Prairie Dropseed	#1	CONT.	6

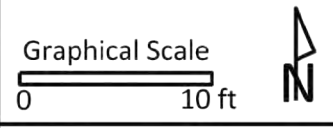
LEGEND



NOTE: PLANTS MARKED IN GRAY ARE DESIGNATED FOR REPLACEMENT. ALL OTHER PLANTS ARE EXISTING.

City of Madison  
Department of Public Works  
**PARKS DIVISION**  
City-County Building, Suite 104  
210 Martin Luther King, Jr. Blvd.  
PO Box 2987  
Madison, WI 53701-2987

*play*  
**MADISON PARKS**



PROJECT:  
2019 PARKS  
DIVISION  
LANDSCAPING

*WARNER PARK*  
1511 NORTHPORT  
DRIVE  
MADISON, WI 53704

Although every effort has been made in preparing these plans and checking them for accuracy, the contractor and subcontractors must check all details and dimensions of their trade and be responsible for the same.

ITEM	DATE
Advised by: SC	2-7-2019
Revised by:	

PUBLIC WORKS PROJECT #:  
**8288**

SHEET TITLE:  
**DETAILED  
LANDSCAPE PLANS**

SHEET NUMBER:  
**L-6**



Although every effort has been made in preparing these plans and checking them for accuracy, the contractor and subcontractors must check all details and dimensions of their trade and be responsible for the same.

ITEM	DATE
Advised by: SC	2-7-2019
Revised by:	

PUBLIC WORKS PROJECT #:  
**8288**

SHEET TITLE:  
**DETAILED  
 LANDSCAPE PLANS**

SHEET NUMBER:  
**L-7**

**PLANT SCHEDULE**

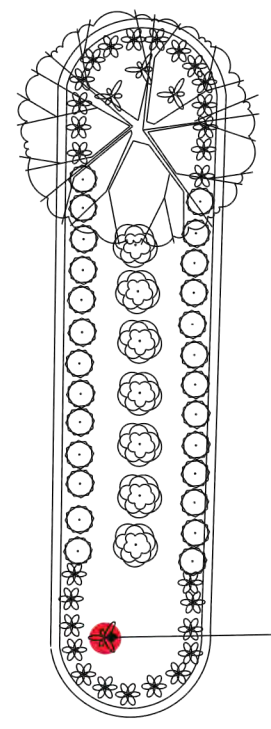
Species	Common Name	Size	Container	Quantity
<b>Shrubs</b>				
Spirea japonica 'Anthony Waterer'	Anthony Waterer Spirea	#2	CONT.	1
<b>Perennials and Grasses</b>				
Rudbeckia fulgida var. sullivantii 'Goldsturm'	Black-eyed Susan	#1	CONT.	6
Sporobolus heterolepis 'Tara'	Prairie Dropseed	#1	CONT.	2

**LEGEND**

 SPIREA JAPONICA 'ANTHONY WATERER'

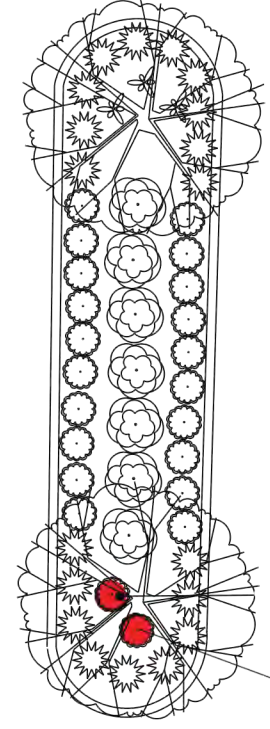
 RUDBECKIA FULGIDA VAR. SULLIVANTII 'GOLDSTURM'

 SPOROBOLUS HETEROLEPIS 'TARA'



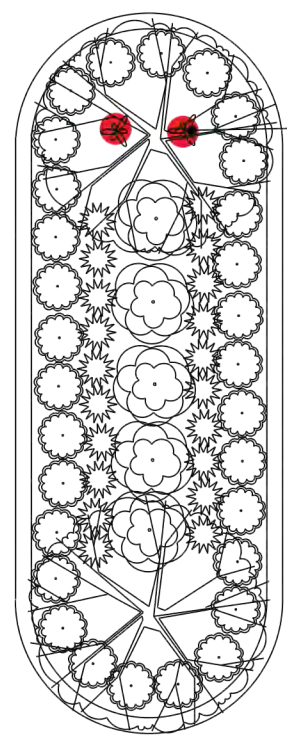
(1) RUDBECKIA FULGIDA VAR. SULLIVANTII 'GOLDSTURM'

12 PLANTING  
L-7 DETAIL



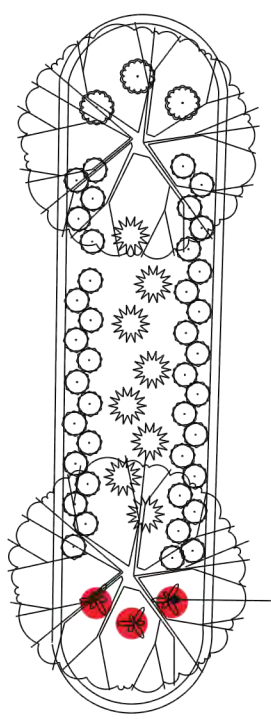
(2) SPOROBOLUS HETEROLEPIS 'TARA'

16 PLANTING  
L-7 DETAIL



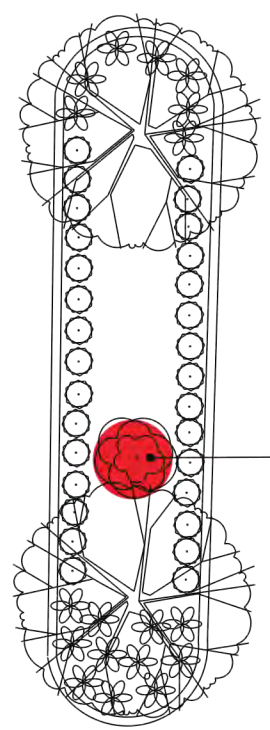
(2) RUDBECKIA FULGIDA VAR. SULLIVANTII 'GOLDSTURM'

19 PLANTING  
L-7 DETAIL



(3) RUDBECKIA FULGIDA VAR. SULLIVANTII 'GOLDSTURM'

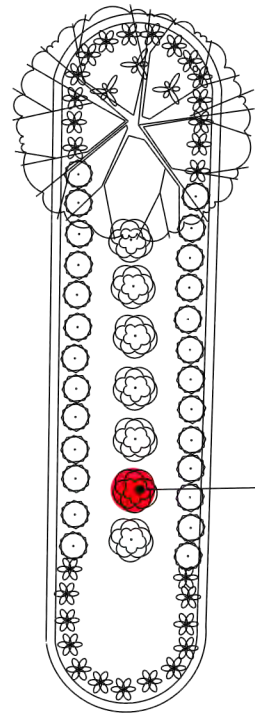
18 PLANTING  
L-7 DETAIL



(1) SPIREA JAPONICA 'ANTHONY WATERER'

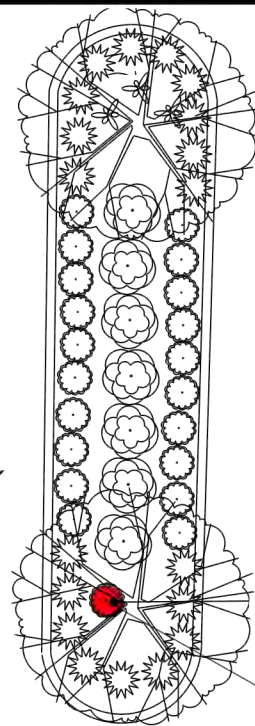
20 PLANTING  
L-7 DETAIL

NOTE: PLANTS MARKED IN GRAY ARE DESIGNATED FOR REPLACEMENT.  
 ALL OTHER PLANTS ARE EXISTING.



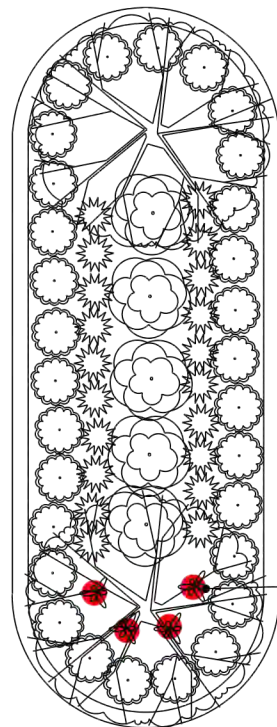
(1) SPIREA JAPONICA 'ANTHONY WATERER'

22 PLANTING  
L-8 DETAIL



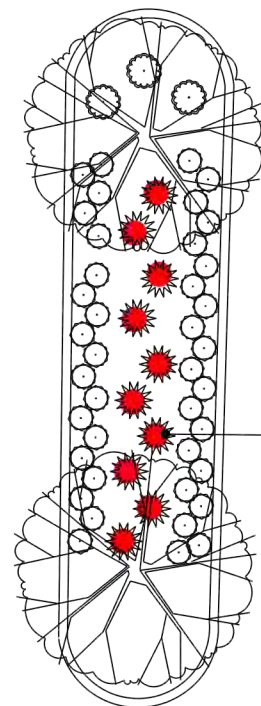
(1) SPOROBOLUS HETEROLEPSIS 'TARA'

23 PLANTING  
L-8 DETAIL



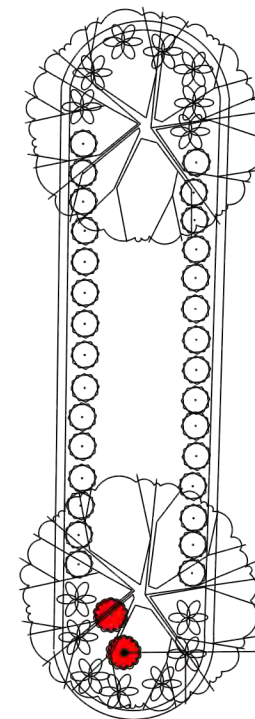
(4) RUDBECKIA FULGIDA VAR. SULLIVANTII 'GOLDSTURM'

24 PLANTING  
L-8 DETAIL



(10) SCHIZACHYRIUM SCOPARIUM 'THE BLUES'

28 PLANTING  
L-8 DETAIL



(2) SPOROBOLUS HETEROLEPSIS 'TARA'

29 PLANTING  
L-8 DETAIL

**PLANT SCHEDULE**

Species	Common Name	Size	Container	Quantity
<b>Shrubs</b>				
Spirea japonica 'Anthony Waterer'	Anthony Waterer Spirea	#2	CONT.	1
<b>Perennials and Grasses</b>				
Rudbeckia fulgida var. sullivantii 'Goldsturm'	Black-eyed Susan	#1	CONT.	4
Schizachyrium scoparium 'The Blues'	Little Bluestem	#1	CONT.	10
Sporobolus heterolepsis 'Tara'	Prairie Dropseed	#1	CONT.	3

**LEGEND**



SPIREA JAPONICA 'ANTHONY WATERER'



SCHIZACHYRIUM SCOPARIUM 'THE BLUES'



RUDBECKIA FULGIDA VAR. SULLIVANTII 'GOLDSTURM'



SPOROBOLUS HETEROLEPSIS 'TARA'

City of Madison  
Department of Public Works  
**PARKS DIVISION**  
City-County Building, Suite 104  
210 Martin Luther King, Jr. Blvd.  
PO Box 2987  
Madison, WI 53701-2987

*play*  
**MADISON  
PARKS**

Graphical Scale

0 10 ft



PROJECT:  
2019 PARKS  
DIVISION  
LANDSCAPING

WARNER PARK  
1511 NORTHPORT  
DRIVE  
MADISON, WI 53704

Although every effort has been made in preparing these plans and checking them for accuracy, the contractor and subcontractors must check all details and dimensions of their trade and be responsible for the same.

ITEM DATE  
Advised by: SC 2-7-2019

Revised by:

PUBLIC WORKS PROJECT #:  
**8288**

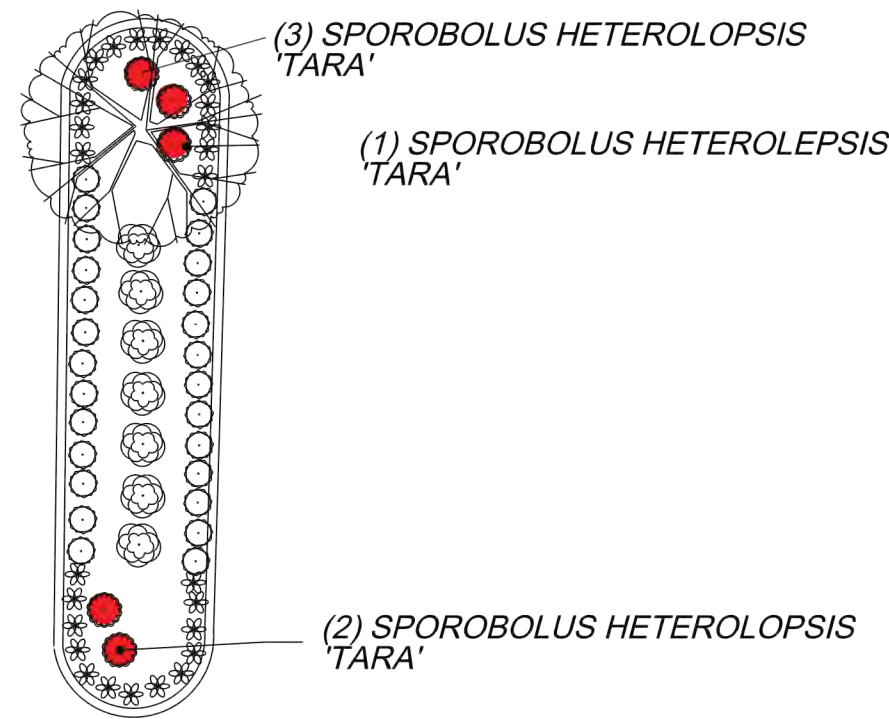
SHEET TITLE:  
**DETAILED  
LANDSCAPE PLANS**

SHEET NUMBER:

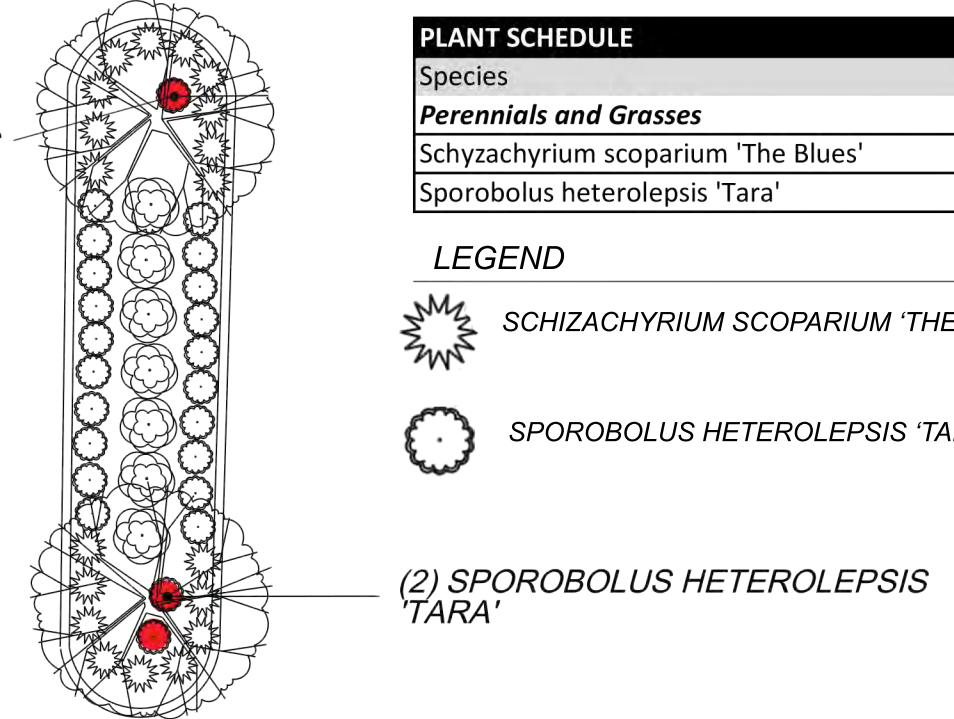
**L-8**

NOTE: PLANTS MARKED IN GRAY ARE DESIGNATED FOR REPLACEMENT.  
ALL OTHER PLANTS ARE EXISTING.

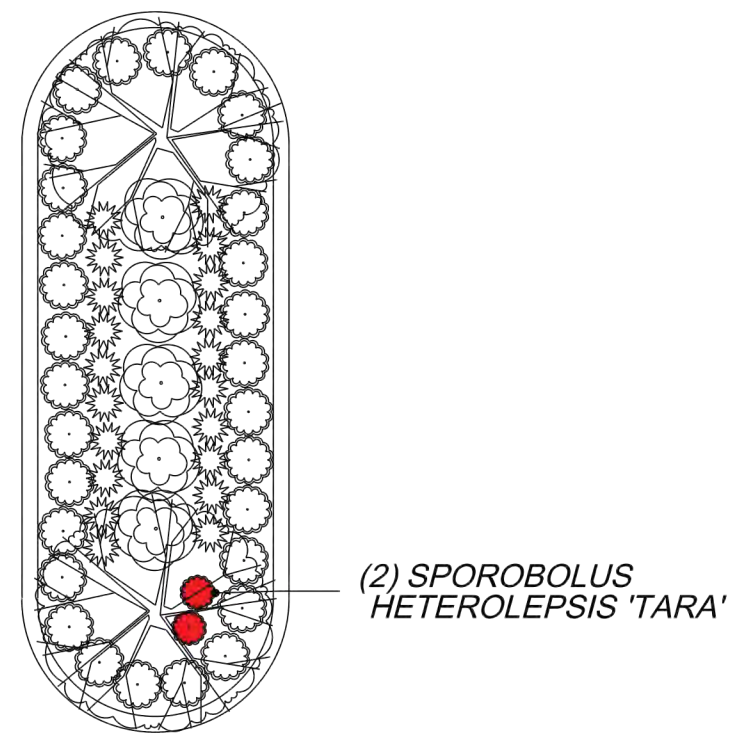




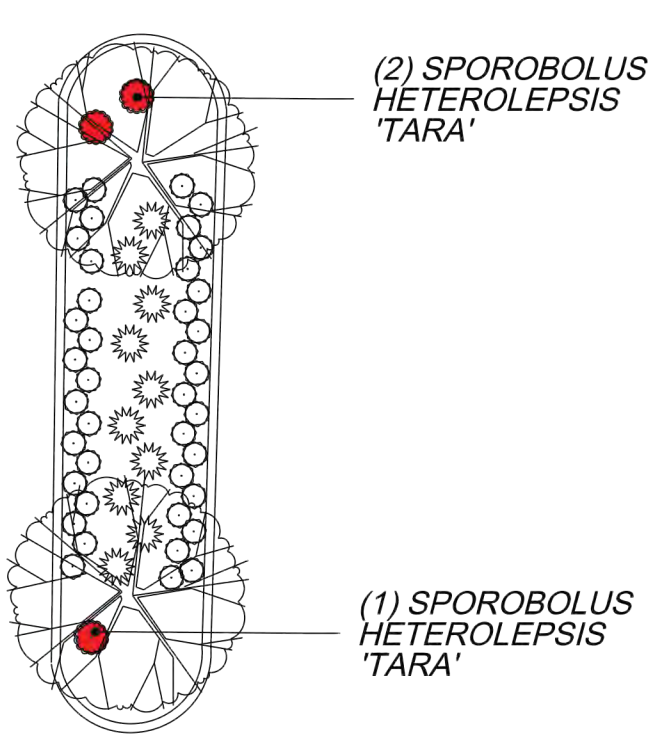
31 PLANTING  
L-9 DETAIL



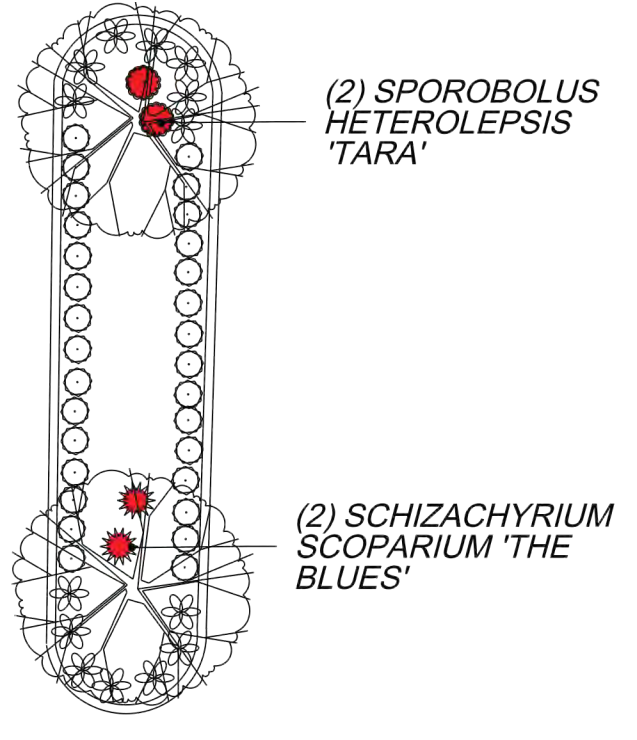
32 PLANTING  
L-9 DETAIL



33 PLANTING  
L-9 DETAIL




34 PLANTING  
L-9 DETAIL




35 PLANTING  
L-9 DETAIL

PLANT SCHEDULE				
Species	Common Name	Size	Container	Quantity
<b>Perennials and Grasses</b>				
Schizachyrium scoparium 'The Blues'	Little Bluestem	#1	CONT.	2
Sporobolus heterolepsis 'Tara'	Prairie Dropseed	#1	CONT.	15

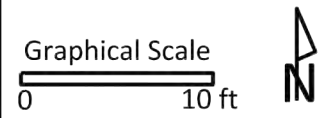
**LEGEND**

 SCHIZACHYRIUM SCOPARIUM 'THE BLUES'

 SPOROBOLUS HETEROLEPSIS 'TARA'

City of Madison  
Department of Public Works  
**PARKS DIVISION**  
City-County Building, Suite 104  
210 Martin Luther King, Jr. Blvd.  
PO Box 2987  
Madison, WI 53701-2987

*play*  
**MADISON  
PARKS**



PROJECT:  
2019 PARKS  
DIVISION  
LANDSCAPING

WARNER PARK  
1511 NORTHPORT  
DRIVE  
MADISON, WI 53704

Although every effort has been made in preparing these plans and checking them for accuracy, the contractor and subcontractors must check all details and dimensions of their trade and be responsible for the same.

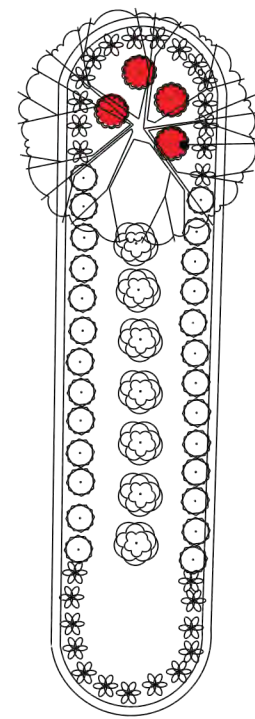
ITEM	DATE
Advised by: SC	2-7-2019
Revised by:	

PUBLIC WORKS PROJECT #:  
**8288**

SHEET TITLE:  
**DETAILED  
LANDSCAPE PLANS**

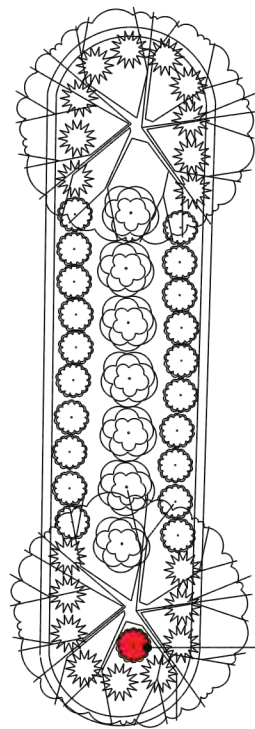
SHEET NUMBER:  
**L-9**

NOTE: PLANTS MARKED IN GRAY ARE DESIGNATED FOR REPLACEMENT.  
ALL OTHER PLANTS ARE EXISTING.



(4) SPOROBOLUS HETEROLOPSIS 'TARA'

36 PLANTING  
L-10 DETAIL



(1) SPOROBOLUS HETEROLOPSIS 'TARA'

37 PLANTING  
L-10 DETAIL

**PLANT SCHEDULE**

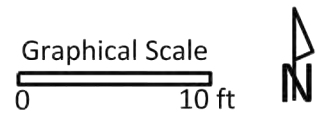
Species	Common Name	Size	Container	Quantity
<b>Perennials and Grasses</b>				
Sporobolus heterolepis 'Tara'	Prairie Dropseed	#1	CONT.	5

**LEGEND**

 SPOROBOLUS HETEROLEPSIS 'TARA'

City of Madison  
Department of Public Works  
**PARKS DIVISION**  
City-County Building, Suite 104  
210 Martin Luther King, Jr. Blvd.  
PO Box 2987  
Madison, WI 53701-2987

*play*  
**MADISON  
PARKS**



PROJECT:  
**2019 PARKS  
DIVISION  
LANDSCAPING**

**WARNER PARK  
1511 NORTHPORT  
DRIVE  
MADISON, WI 53704**

Although every effort has been made in preparing these plans and checking them for accuracy, the contractor and subcontractors must check all details and dimensions of their trade and be responsible for the same.

ITEM	DATE
Advised by: SC	3-7-2019
Revised by:	

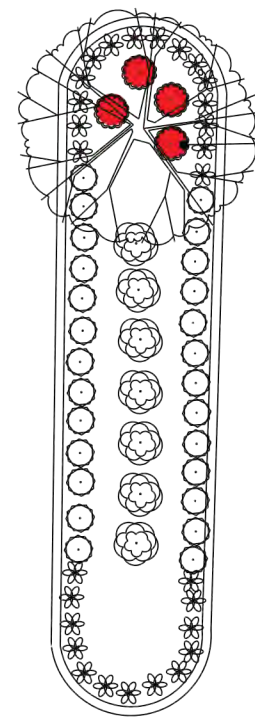
PUBLIC WORKS PROJECT #:  
**8288**

SHEET TITLE:  
**DETAILED  
LANDSCAPE PLANS**

SHEET NUMBER:  
**L-10**

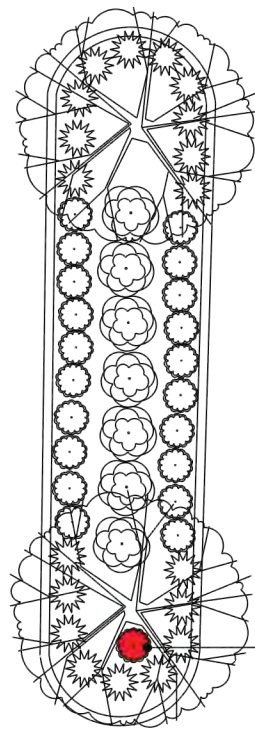
NOTE: PLANTS MARKED IN GRAY ARE DESIGNATED FOR REPLACEMENT.  
ALL OTHER PLANTS ARE EXISTING.





(4) SPOROBOLUS HETEROLOPSIS 'TARA'

36 PLANTING  
L-10 DETAIL



(1) SPOROBOLUS HETEROLOPSIS 'TARA'

37 PLANTING  
L-10 DETAIL

**PLANT SCHEDULE**

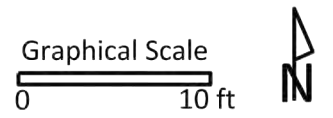
Species	Common Name	Size	Container	Quantity
<b>Perennials and Grasses</b>				
Sporobolus heterolepis 'Tara'	Prairie Dropseed	#1	CONT.	6

**LEGEND**

 SPOROBOLUS HETEROLEPSIS 'TARA'

City of Madison  
Department of Public Works  
**PARKS DIVISION**  
City-County Building, Suite 104  
210 Martin Luther King, Jr. Blvd.  
PO Box 2987  
Madison, WI 53701-2987

*play*  
**MADISON  
PARKS**



PROJECT:  
**2019 PARKS  
DIVISION  
LANDSCAPING**

*WARNER PARK  
1511 NORTHPORT  
DRIVE  
MADISON, WI 53704*

Although every effort has been made in preparing these plans and checking them for accuracy, the contractor and subcontractors must check all details and dimensions of their trade and be responsible for the same.

ITEM	DATE
Advised by: SC	2-7-2019
Revised by:	

PUBLIC WORKS PROJECT #:  
**8288**

SHEET TITLE:  
*DETAILED  
LANDSCAPE PLANS*

SHEET NUMBER:  
**L-10**

NOTE: PLANTS MARKED IN GRAY ARE DESIGNATED FOR REPLACEMENT.  
ALL OTHER PLANTS ARE EXISTING.